

GLENN COUNTY

Planning & Public Works Agency

P.O. Box 1070 / 777 N. Colusa Street
Willows, CA 95988
530.934.6530 Fax 530.934.6533
www.countyofglenn.net



TO: Prospective Bidders
RE: Requests for Information (RFI) Response #1

October 27, 2017

Questions received are in black, County response is in red.

1. Do you have any figures showing the planned work areas? Or could you clarify if the work will be restricted to the launches themselves or extend beyond to include other facilities?

Work will be limited to the launches and their immediate surroundings. Figures which were submitted to permitting agencies are attached to this response.

2. Are you aware of any archaeological or historic architectural technical studies that focused on the present of proposed project areas? If so, could you provide any information related to their findings?

No.

3. Will USACE conduct all phases of Native American coordination for the project or will USACE expect PPWA's consult to conduct certain phases or all of the Native American coordination and report to ACOE? If there is some sort of breakdown in responsibilities, please advise.

The selected consultant will be expected to perform any Native American coordination necessary.

4. USACE's scoping document specifies subsurface investigations. Does USACE have specific methods in mind? Does USACE approve of, or expect the use of, a backhoe probe, or can the subsurface work be accomplished using a grid of hand-driven barrel augers?

USACE has provided no guidance regarding subsurface work.

5. The scope does not mention GIS shapefiles or high-resolution GPS data collection. If I propose collection/submittal of these data sets will my proposal be credited for additional merit or penalized for additional costs?

The work will be awarded to the lowest bidder who is capable of providing a Cultural Resources Report sufficient to initiate consultation for compliance with Section 106 of National Historic Preservation Act of 1966, as amended.



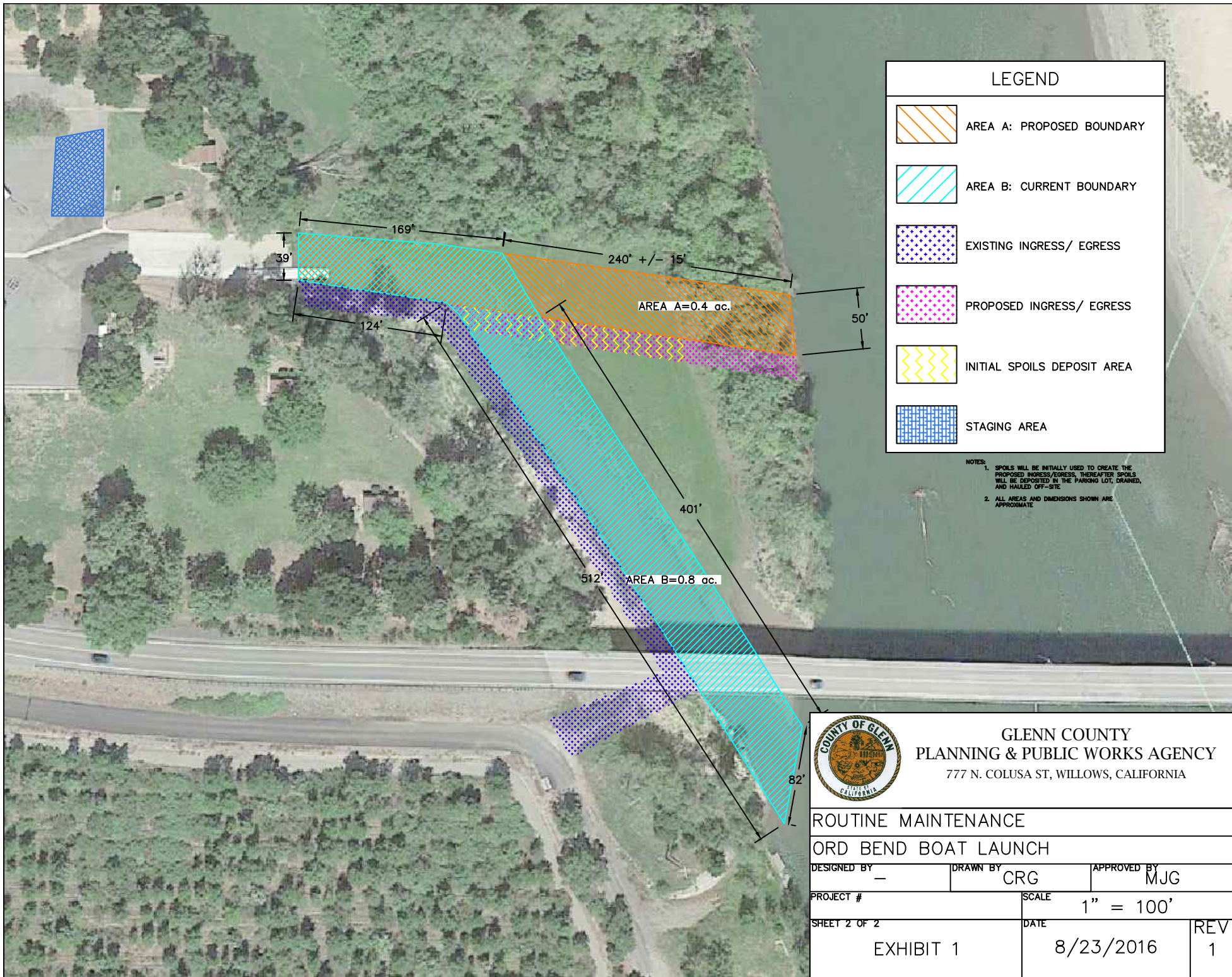
ORD BEND
BOAT LAUNCH

ORD BEND
BRIDGE



GLENN COUNTY
PLANNING & PUBLIC WORKS AGENCY
777 N. COLUSA ST, WILLOWS, CALIFORNIA

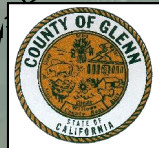
ROUTINE MAINTENANCE		
ORD BEND BOAT LAUNCH		
DESIGNED BY -	DRAWN BY CRG	APPROVED BY MJG
PROJECT #	SCALE 1" = 250'	
SHEET 1 OF 2 EXHIBIT 1	DATE 8/23/2016	REV 1



LEGEND

-  AREA A: PROPOSED BOUNDARY
-  AREA B: CURRENT BOUNDARY
-  EXISTING INGRESS/ EGRESS
-  PROPOSED INGRESS/ EGRESS
-  INITIAL SPOILS DEPOSIT AREA
-  STAGING AREA

NOTES:
 1. SPOILS WILL BE INITIALLY USED TO CREATE THE PROPOSED INGRESS/EGRESS, THEREAFTER SPOILS WILL BE DEPOSITED IN THE PARKING LOT, DRAINED, AND HAULED OFF-SITE.
 2. ALL AREAS AND DIMENSIONS SHOWN ARE APPROXIMATE



GLENN COUNTY
PLANNING & PUBLIC WORKS AGENCY
 777 N. COLUSA ST, WILLOWS, CALIFORNIA

ROUTINE MAINTENANCE		
ORD BEND BOAT LAUNCH		
DESIGNED BY	DRAWN BY	APPROVED BY
—	CRG	MJG
PROJECT #	SCALE	1" = 100'
SHEET 2 OF 2	DATE	REV
EXHIBIT 1	8/23/2016	1



BUTTE CITY
BOAT LAUNCH

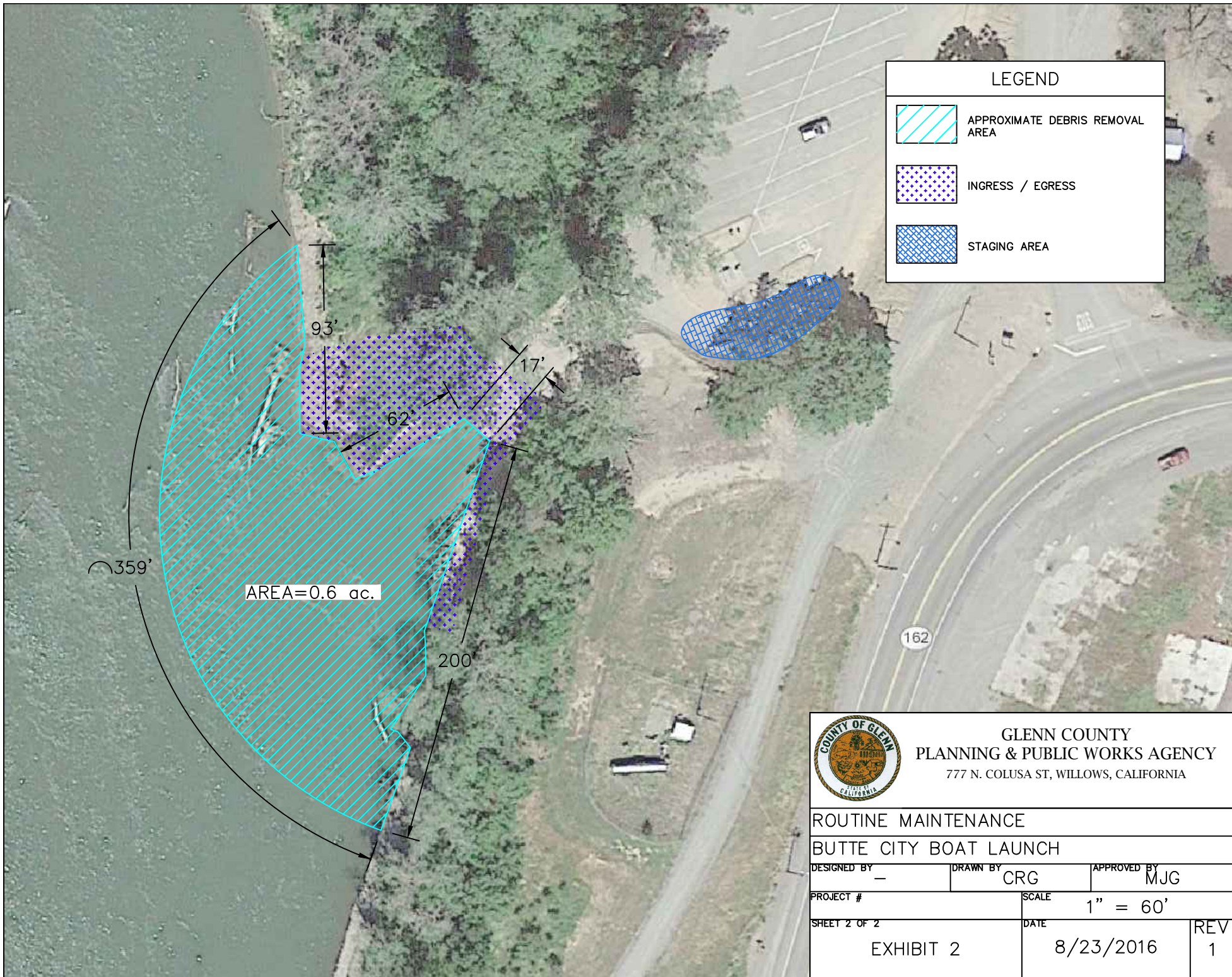
Butte City

BUTTE CITY BRIDGE

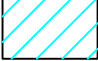




GLENN COUNTY
PLANNING & PUBLIC WORKS AGENCY
777 N. COLUSA ST, WILLOWS, CALIFORNIA

ROUTINE MAINTENANCE		
BUTTE CITY BOAT LAUNCH		
DESIGNED BY	DRAWN BY	APPROVED BY
-	CRG	MJG
PROJECT #	SCALE	
	1" = 500'	
SHEET 1 OF 2	DATE	REV
EXHIBIT 2	8/23/2016	1



LEGEND

-  APPROXIMATE DEBRIS REMOVAL AREA
-  INGRESS / EGRESS
-  STAGING AREA

359'

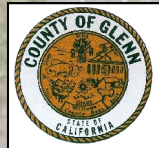
AREA=0.6 ac.

93'

62'

17'

200'



GLENN COUNTY
 PLANNING & PUBLIC WORKS AGENCY
 777 N. COLUSA ST, WILLOWS, CALIFORNIA

ROUTINE MAINTENANCE		
BUTTE CITY BOAT LAUNCH		
DESIGNED BY	DRAWN BY	APPROVED BY
-	CRG	MJG
PROJECT #	SCALE	
	1" = 60'	
SHEET 2 OF 2	DATE	REV
EXHIBIT 2	8/23/2016	1